



Nevada Labor Market Briefing: October 2018

Summary of Labor Market Economic Indicators

Department of Employment, Training, & Rehabilitation

Don Soderberg, Director

Dennis Perea, Deputy Director

David Schmidt, Chief Economist

Prepared by the Research and Analysis Bureau

State Unemployment Rate

- ❑ 4.4% Unemployment Rate (SA¹)
 - ❑ Down 0.1 percentage point from September; down from 4.9% a year ago
 - ❑ Off more than nine full percentage points from recessionary peak
 - ❑ In absolute terms, unemployment totaled 67,118; down 341 over the month and off from a recession high of 186,900
 - ❑ The rate declined this month after remaining unchanged last month
 - ❑ Compares to a 3.7% rate for the U.S.— 0.7 percentage point higher
 - ❑ U.S. rate was more than four points higher at height of recession
 - ❑ From 1997 to 2018, the gap has averaged 0.8 point
 - ❑ Nevada's rate is down half a percentage point over the year while the Nation's is down 0.4 percentage point.

¹ seasonally adjusted

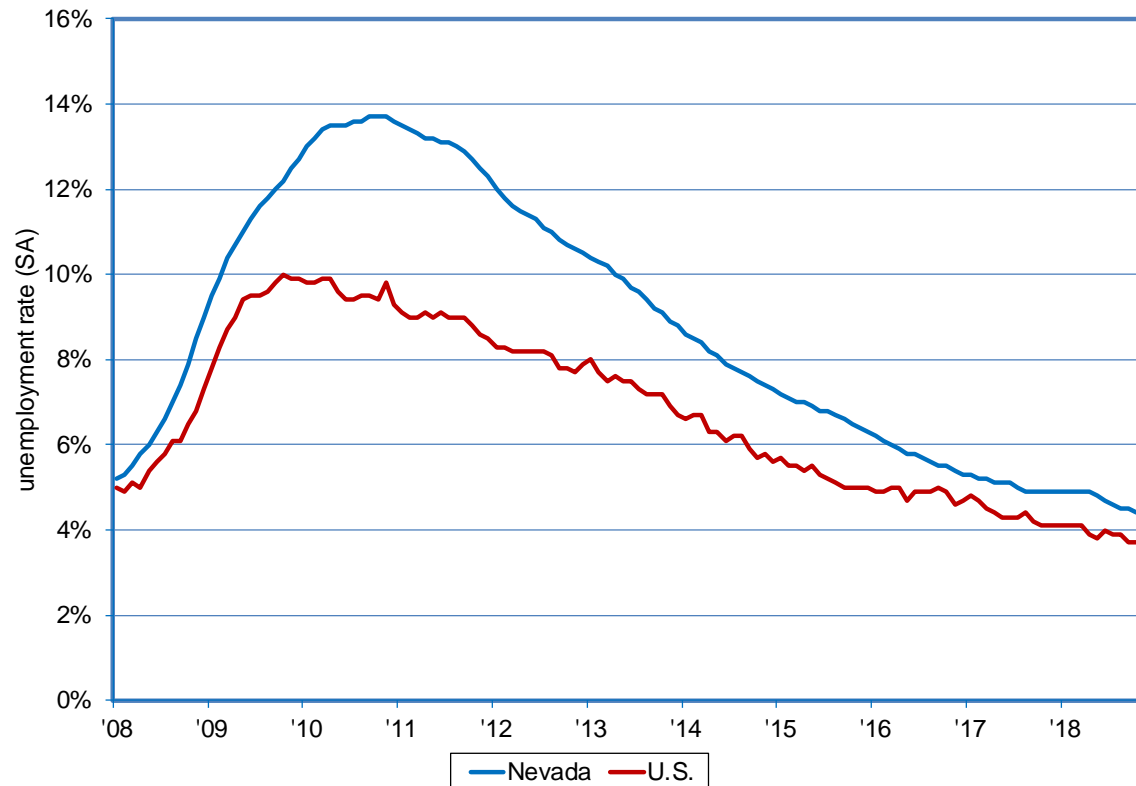
October 2018 Unemployment Rate: 4.4%

Down from 4.9%
a year ago¹

Peaked at 13.7%
during the
recession, more
than nine points
higher

Lowest rate since
June 2007

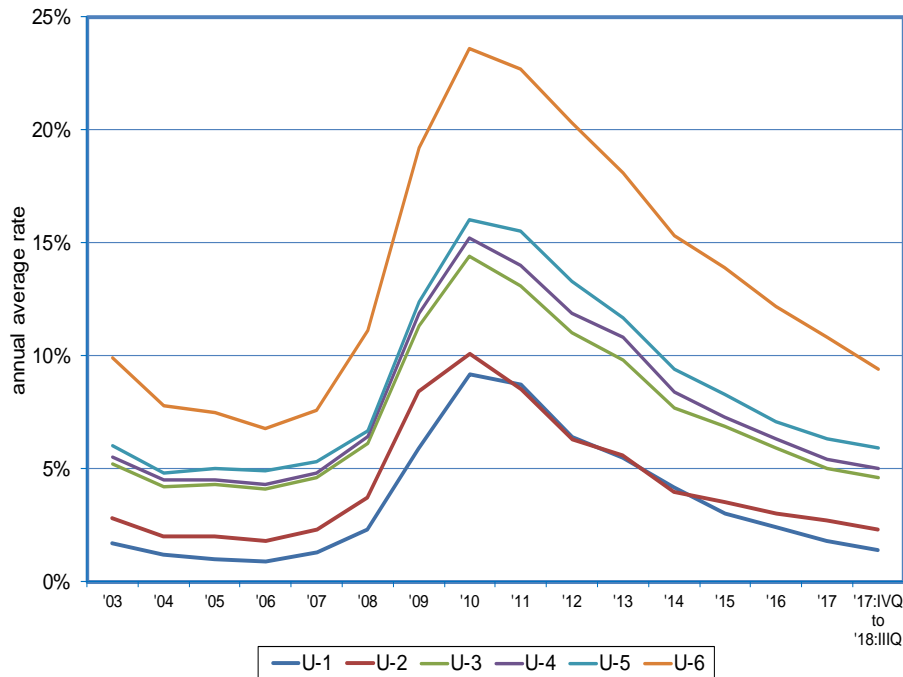
Unemployment Rate: Nevada vs. U.S.



¹ seasonally adjusted

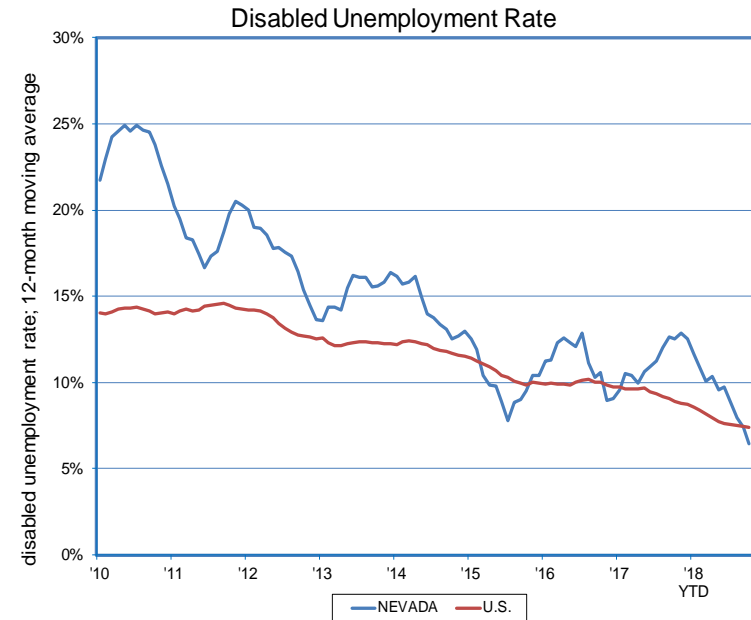
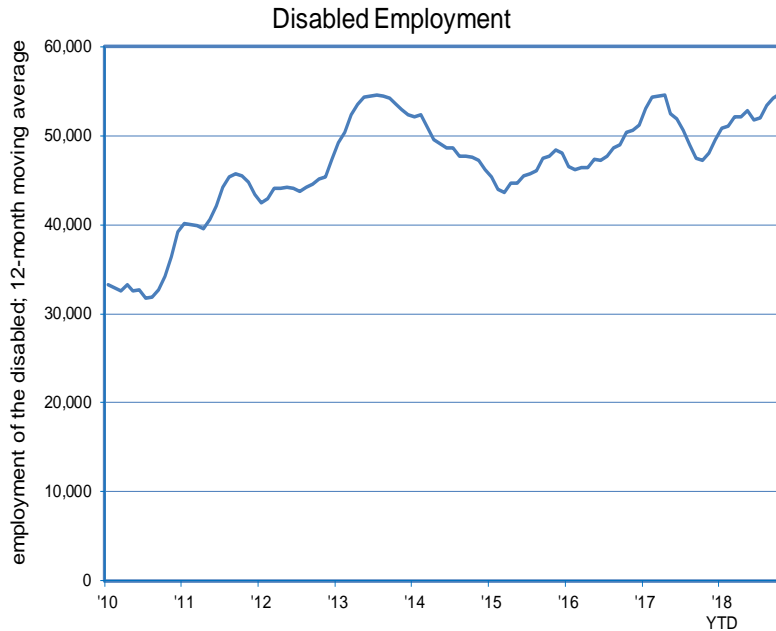
Alternative Measures of Labor Underutilization Declined Over the Year

Alternative Measures

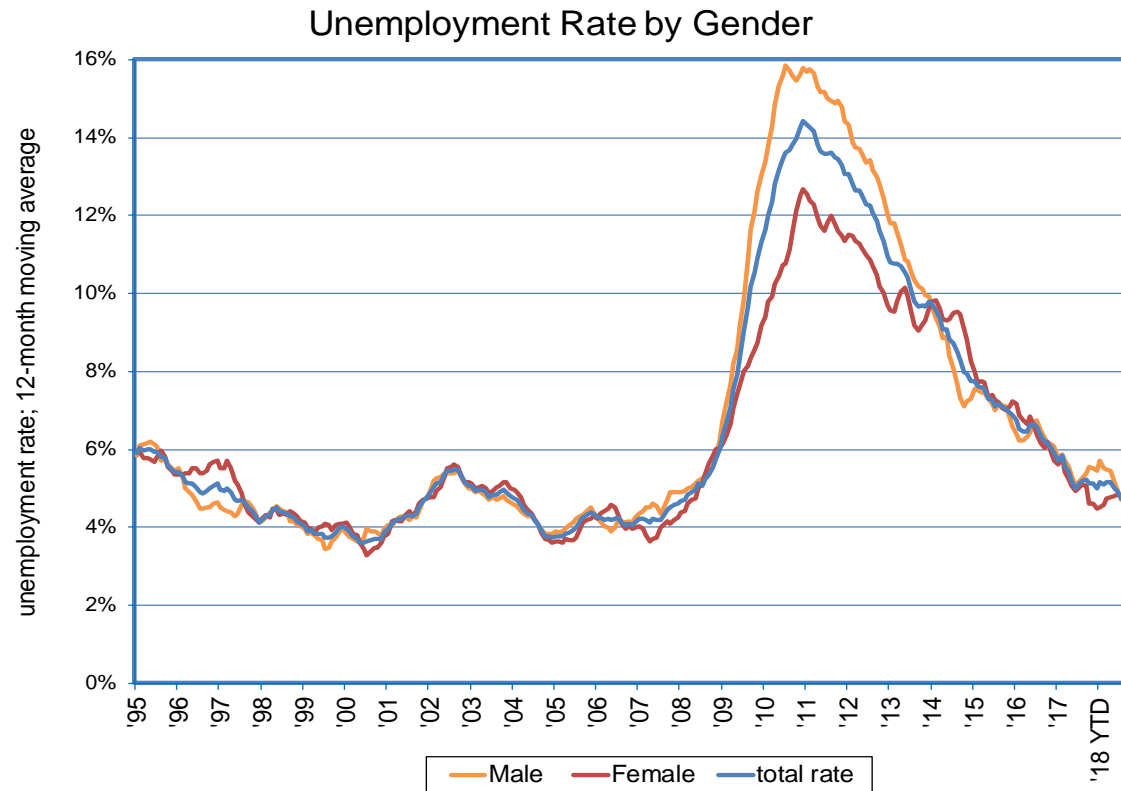


Alternative Measures of Labor Underutilization				
Measure	Underutilization Concept	Annual Average 2017:IIIQ through 2018:IIQ	Annual Average 2017:IVQ through 2018:IIIQ	Over the year percentage points change
Official Rate	jobless persons available to take a job who have actively sought work in the past four weeks	4.8%	4.7%	-0.1
U-1	jobless 15 weeks or longer	1.6%	1.4%	-0.1
U-2	job losers and persons losing a temporary job	2.6%	2.3%	-0.1
U-3	similar to official rate	4.9%	4.6%	-0.2
U-4	U-3 plus discouraged workers	5.2%	5.0%	-0.3
U-5	U-4 plus others marginally attached to the labor force	6.1%	5.9%	-0.3
U-6	U-5 plus those employed part-time for economic reasons	9.7%	9.4%	-0.7

Employment of Disabled Nevadans At Record High; While Disabled Unemployment Rate Reaches New Low



Gap Between Male/Female Unemployment Rate Continues to Decline



Initial Claims for Unemployment Continue Year-over-Year Declines

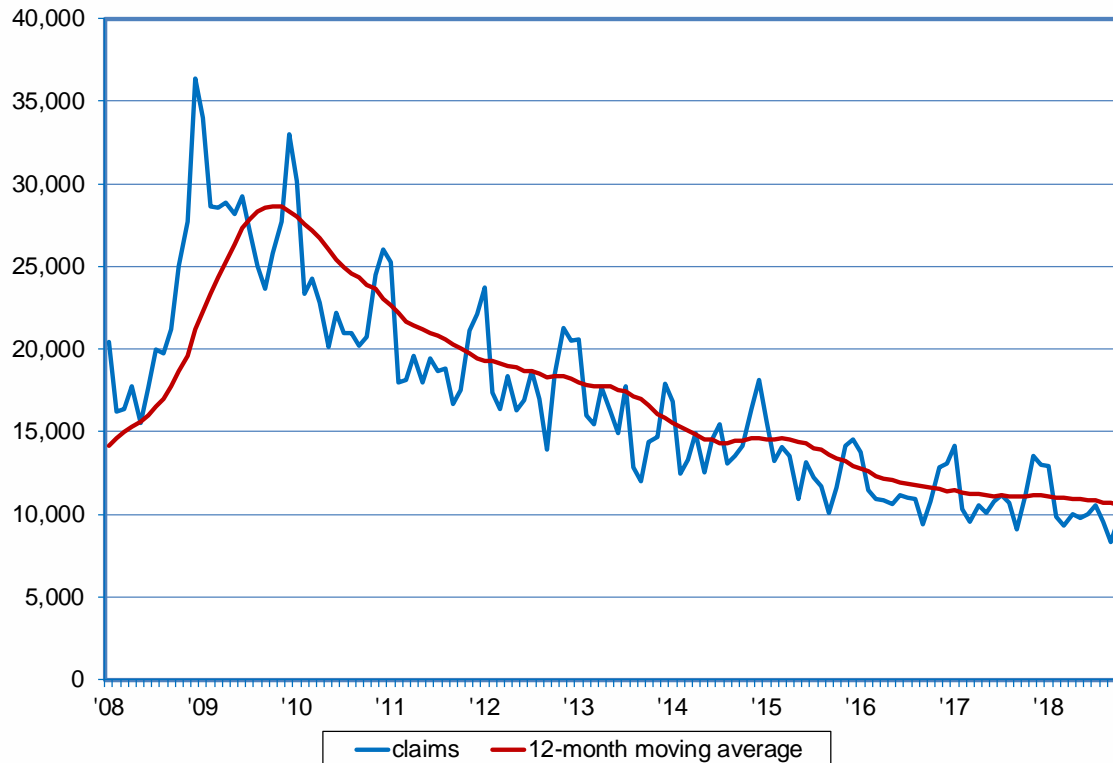
9,900 initial claims in October.

Down 11.6% or 1,300 claims over the year.

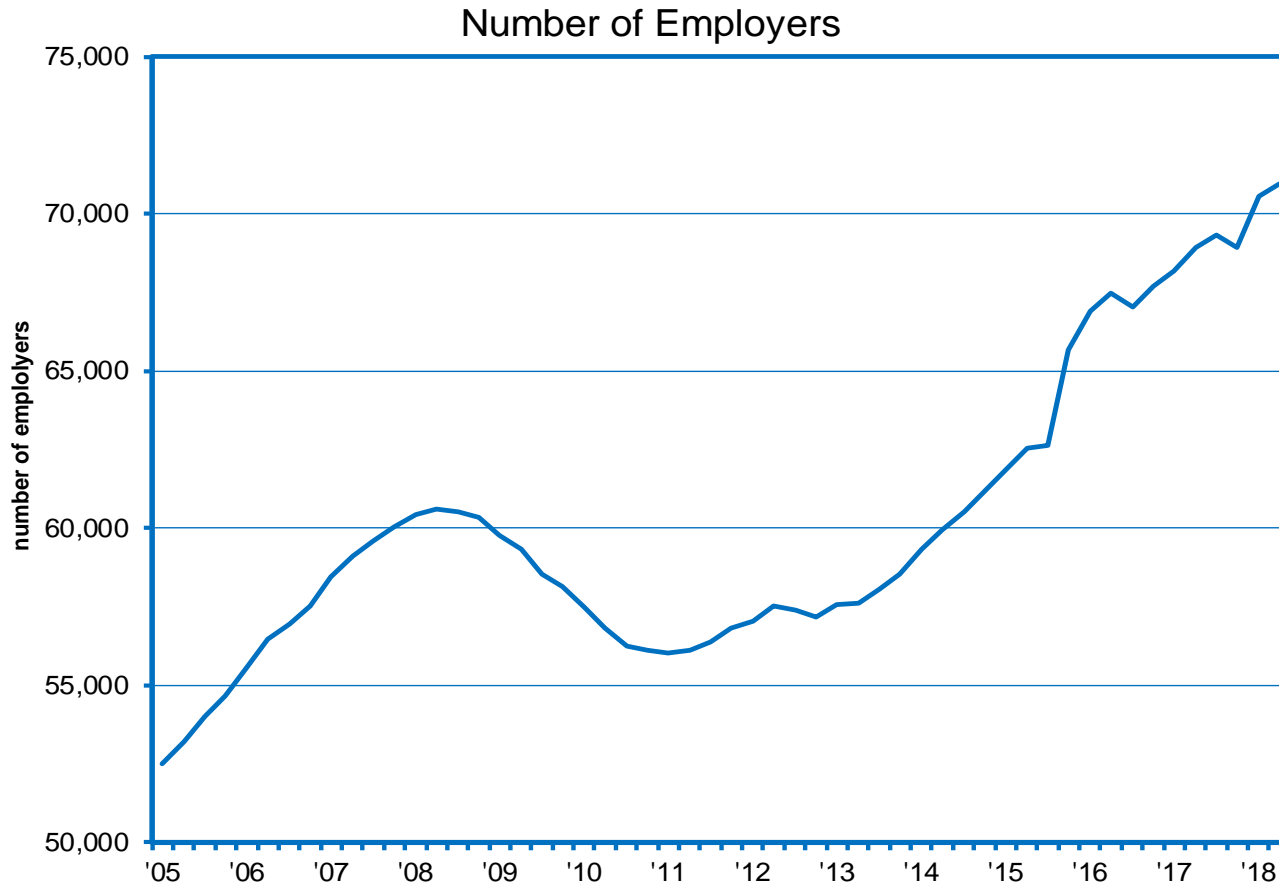
Lowest October reading for initial claims since 1999.

Exhaustion rate edged down to 33.1%.

Initial Claims for Unemployment Insurance

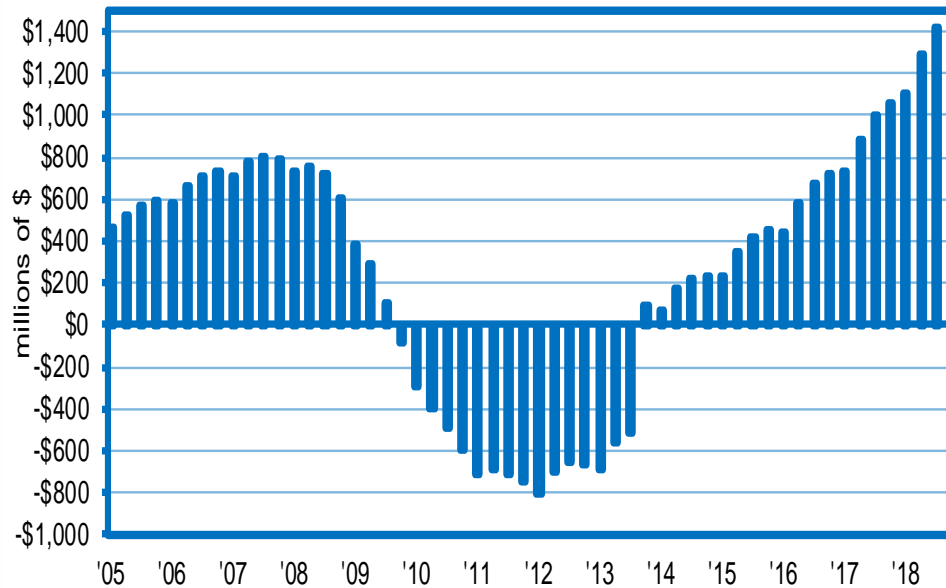


Number of Employers in Nevada Sets New Record-High in 2018:IIIQ; 28 Consecutive Quarters of Year-over-Year Growth



Nevada's Unemployment Insurance Trust Fund Balance Over \$1.4 Billion at the End of the Third Quarter of 2018

UI Trust Fund Balance



Trust Fund Overview	Millions of \$
Q2 2018 Ending Balance	\$1,287.31
Plus:	
Contributions	\$184.02
Interest Earned	\$8.02
Less:	
Benefit Payments	\$65.71
Q3 2018 Ending Balance	\$1,413.65

State Employment

- ❑ Non-Farm Job Levels Up 45,800 (SA¹) Relative to a Year Ago in October
- ❑ 94 consecutive months of year-over-year gains
 - ❑ 3.4% gain compares to 1.7% in the nation
- ❑ Up 5,100 Over the Month
 - ❑ 3,500 (NSA²) jobs were expected to be added based upon historical trends, but 8,600 were actually added, resulting in the seasonally-adjusted gain
 - ❑ 3,600 (SA) more jobs added over the month than in October 2017 (1,500)
 - ❑ September's employment level was revised down by 1,300 (SA), bringing the two-month gain to 6,600 jobs

¹ seasonally adjusted

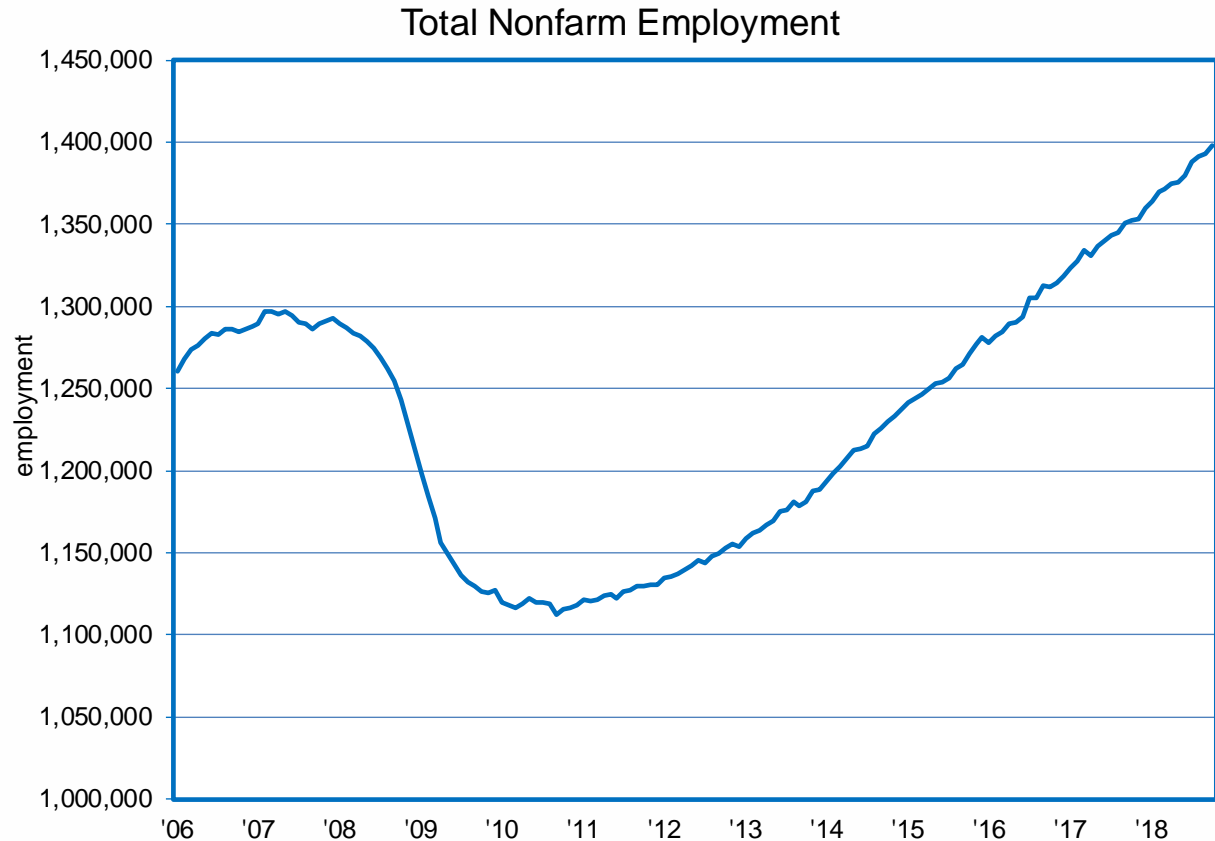
² not seasonally adjusted

October Employment Beats Seasonal Expectations

Total Employment of 1,397,900 in October¹

Large gains in professional & business services, leisure/hospitality, manufacturing

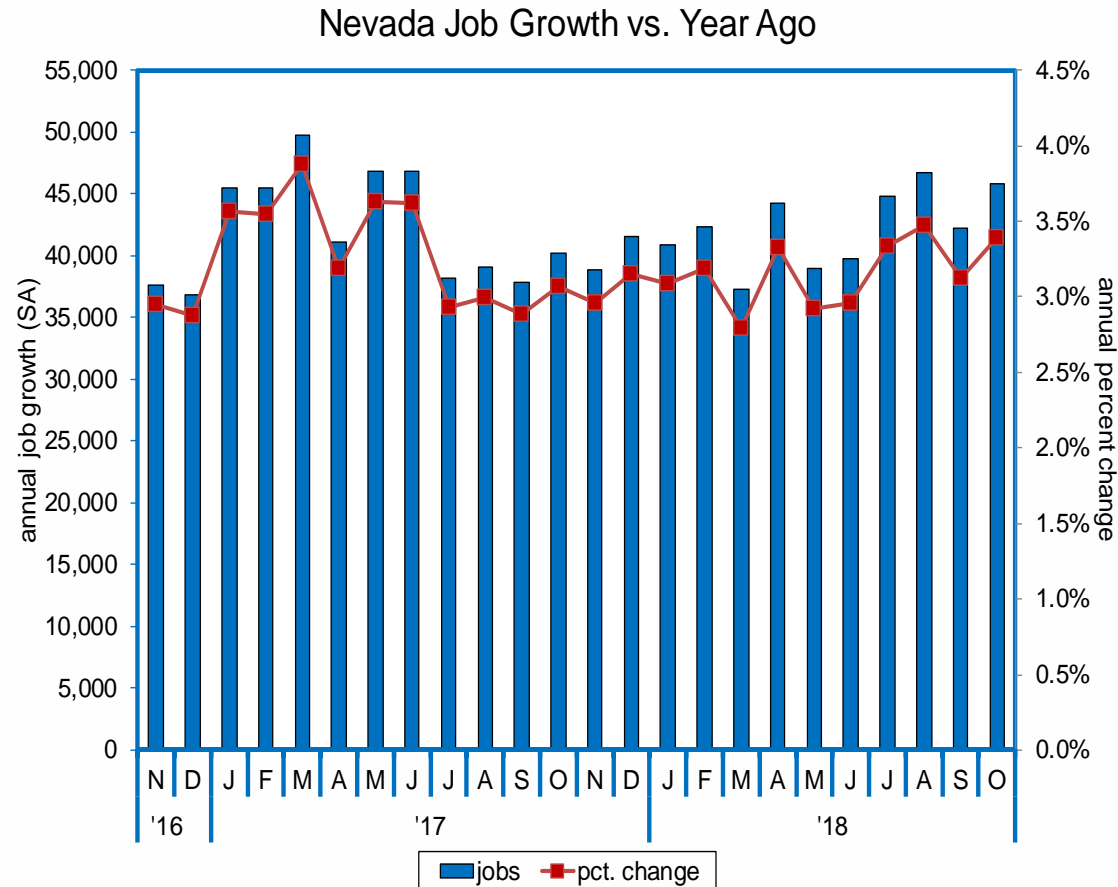
100,600 jobs above previous peak



¹ seasonally adjusted

Annual Job Growth Still Above Three Percent

The State added 45,800 jobs (3.4%) over the year in October¹



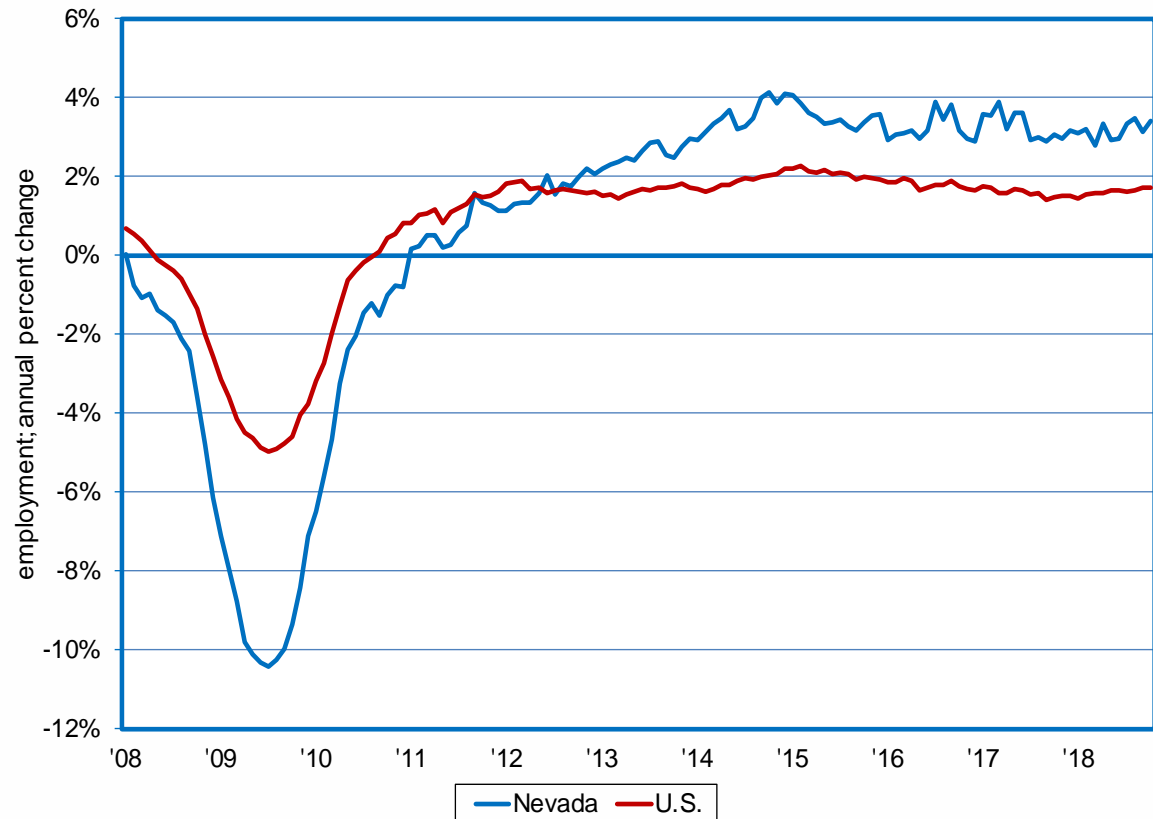
¹ seasonally adjusted

Nevada Growing Twice as Fast as Nation

Nevada's employment grew at an annual rate of 3.4% in October, compared to 1.7% in the nation as a whole¹

Nevada's job growth has outpaced the nation for 75 straight months

Job Growth: NV vs. U.S.



¹ seasonally adjusted

Year-to-Date Job Growth Across Nearly All Sectors

Construction added 7,700 jobs year-to-date through October, a gain of 9.3%¹

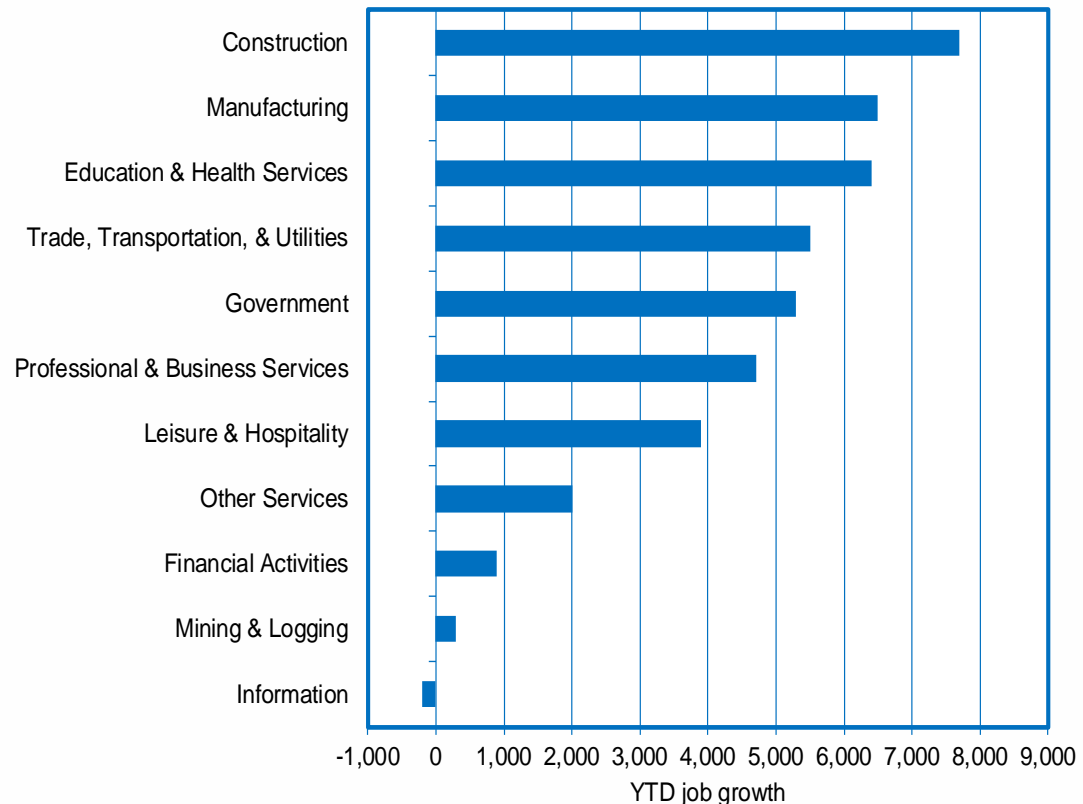
Manufacturing has grown by 13.7% after adding 6,500 jobs

Education/health services grew by 4.8% and added 6,400 jobs

Trade/trans/utilities up 5,500 jobs

Information sector is down by 200 jobs

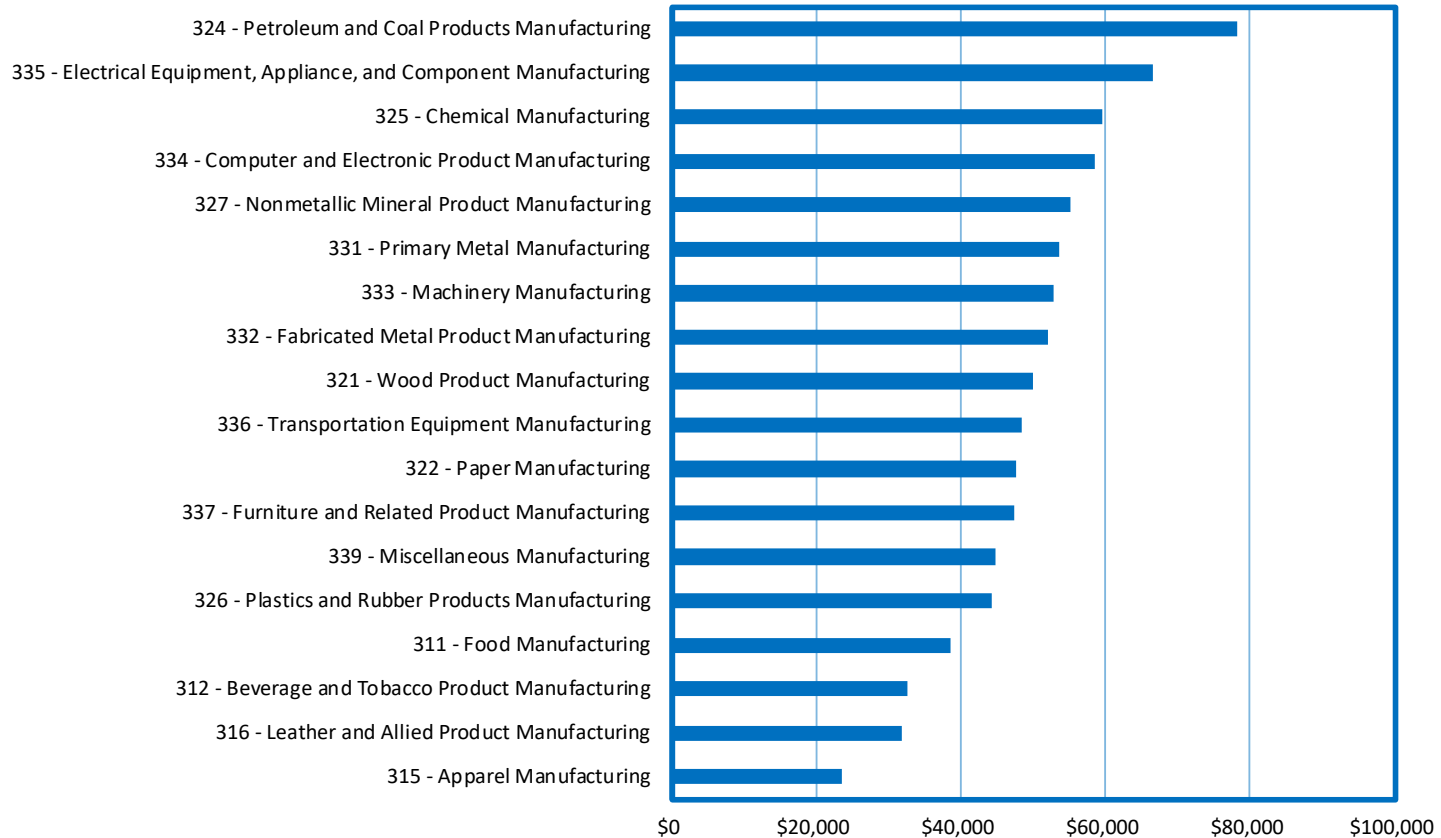
Nevada Nonfarm Job Growth by Industry



¹ not seasonally adjusted

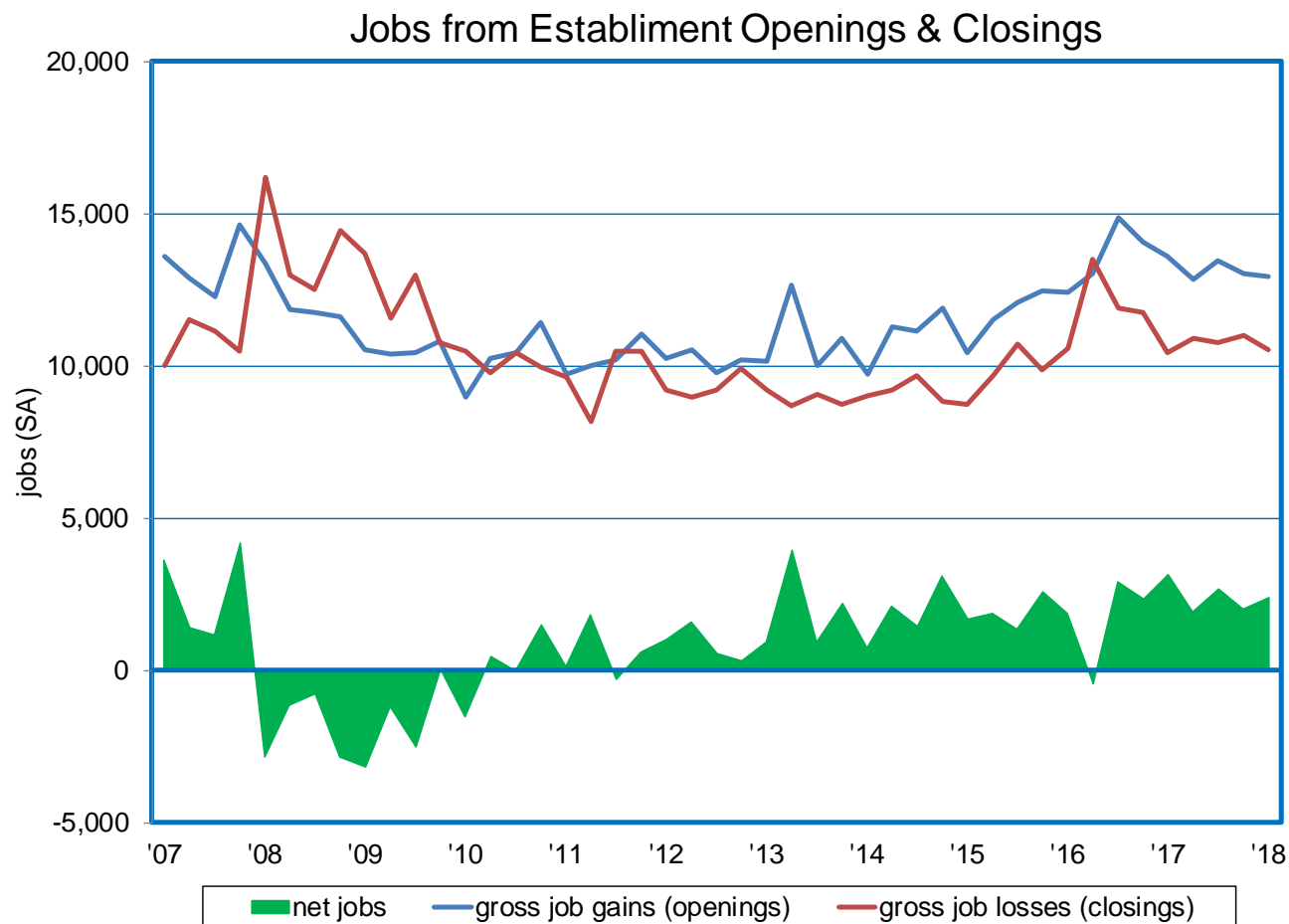
Manufacturing Average Wages and Most Common Degrees¹

NPWR Manufacturing

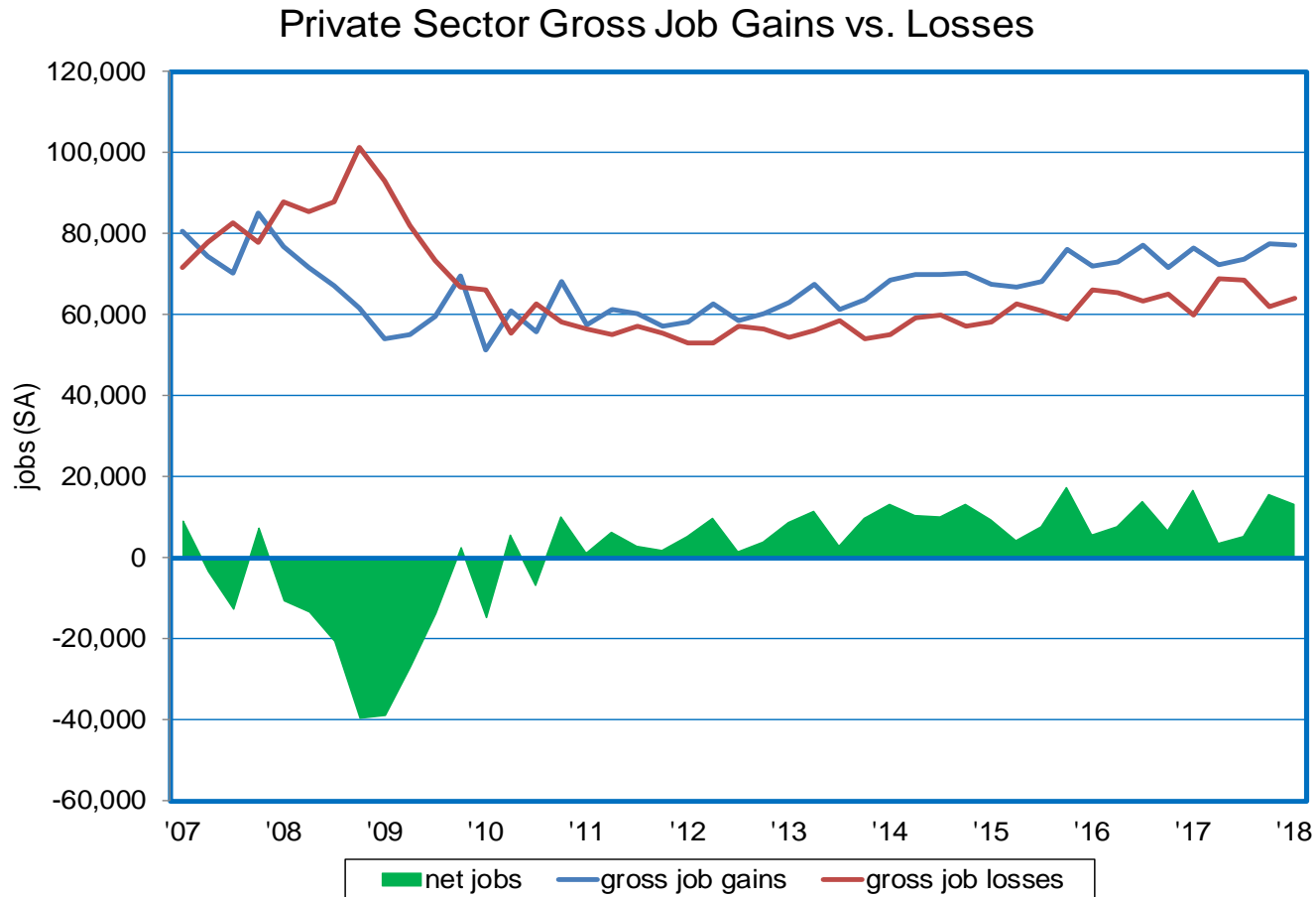


¹ NPWR approximates annual salaries by only including individuals with wages in all four quarters of a year in the same industry.

Gross Job Gains in Opening Establishments > Losses in Closing Establishments in 25 of the Past 26 Quarters; 2018:IQ Net Gain=2,414



Gross Nevada Private Sector Gross Job Gains > Gross Job Losses in 30 Straight Quarters; 2018:IQ Net Gain = 13,224 Jobs



For Additional Information, Please Contact:

Nevada Department of Employment, Training and Rehabilitation
Research and Analysis Bureau

David Schmidt
Chief Economist
deschmidt@nvdetr.org

Christopher Robison
Supervising Economist
c-robison@nvdetr.org

(775) 684-0450
<http://www.nevadaworkforce.com>

This workforce product was funded by a grant awarded by the U.S. Department of Labor's Employment and Training Administration. The product was created by the recipient and does not necessarily reflect the official position of the U.S. Department of Labor. The U.S. Department of Labor makes no guarantees, warranties, or assurances of any kind, express or implied, with respect to such information, including any information on linked sites and including, but not limited to, accuracy of the information or its completeness, timeliness, usefulness, adequacy, continued availability, or ownership. This product is copyrighted by the institution that created it. Internal use by an organization and/or personal use by an individual for non-commercial purposes is permissible. All other uses require the prior authorization of the copyright owner.