

Joe Lombardo
Governor

Christopher Sewell
Director



David Schmidt
Chief Economist

Media Contact:
Valentina Bonaparte
detrmedia@detr.nv.gov

For Immediate Release
January 27, 2026

DETR Releases Local Area Employment Statistics for December 2025

According to the Nevada Department of Employment, Training and Rehabilitation's ([DETR](#)) December 2025 economic report, the state's seasonally adjusted unemployment rate was 5.2 percent which was unchanged from November. Seasonally adjusted estimates account for regularly seen economic patterns, with the following estimates not seasonally adjusted.

In the three Metropolitan Statistical Areas (MSA), the unemployment rates were 5.2 percent in the Las Vegas area, 4 percent in Reno, and 4 percent in the Carson area in December 2025.

In Nevada's counties, the lowest unemployment rate was observed in Pershing County at 3.5 percent, and Mineral County had the highest rate at 9.3 percent. For a look at the unemployment rate in your county, visit our [Area Profiles Page](#).

For the latest information on the Nevada economy including employment, unemployment, and unemployment insurance check out our monthly [Labor Market Overview](#), or to see the data on your area, take a look at our monthly [Local Area Labor Market Overview](#).

Additional information on unemployment estimates along with a complete breakout of unemployment in counties, cities, and other areas in Nevada can be found by visiting our [Local Area Unemployment Statistics](#) page. Additionally, employment estimates by industry can be found at our [Current Employment Statistics](#) page.

—###—

ABOUT THE RESEARCH AND ANALYSIS BUREAU:

The [Research and Analysis Bureau](#) is Nevada's premier source for labor market information. A part of DETR, the Bureau is responsible for creating, analyzing, and reporting Nevada's labor market information, in cooperation with the United States Bureau of Labor Statistics (BLS).

Joe Lombardo

Governor

Christopher Sewell

Director



David Schmidt

Chief Economist

Media Contact:

Valentina Bonaparte

detrmedia@detr.nv.gov

Counties and Cities Employment & Unemployment

December 2025

Published on January 27, 2026

In December 2025, the seasonally adjusted unemployment rate in Nevada remained steady at 5.2 percent. The labor force increased by 9,353 individuals. The increase in the labor force was the result of an increase in employment of 9,440 and unemployment decreasing by 87.

At the MSA (Metropolitan Statistical Area) level, Nevada experienced a decrease in unemployment rates across all its MSAs compared to November 2025. In the Las Vegas-Henderson-North Las Vegas MSA, the unemployment rate decreased by 0.2 pp, moving from 5.4 percent in November to 5.2 percent in December 2025. Over the same period, the Reno-Sparks MSA unemployment rate decreased by 0.1 pp, changing from 4.1 percent to 4 percent. Meanwhile, the Carson City MSA unemployment rate remained steady at 4 percent. These figures are not seasonally adjusted.

At the county level, the majority of Nevada's counties (14 out of 17) experienced a decrease in unemployment rates compared to November 2025. The counties with the largest decreases were Mineral (-1.2 pp), followed by Eureka (-0.4 pp).

Figures for state unemployment estimates come from the Local Area Unemployment Statistics (LAUS) program, a state/federal partnership sponsored by the Bureau of Labor Statistics (BLS-LAUS). This program produces monthly and annual employment, unemployment, and labor force data for census regions, states, counties, metropolitan areas, and many large cities, based on place of residence. For more on LAUS data or for a look at estimates in your area visit our [LAUS Page](#), and for a look at the economic profile of Nevada, the metropolitan areas, or your county visit our [Area Profiles](#) Page.

500 East Third Street, Room 200 • Carson City, NV 89713 • (775) 684-3911 • Fax (775) 684-3908

2800 E. St. Louis Avenue • Las Vegas, Nevada 89104 • (702) 486-7923

detr.nv.gov

U.S. & Nevada Local Area Unemployment Statistics

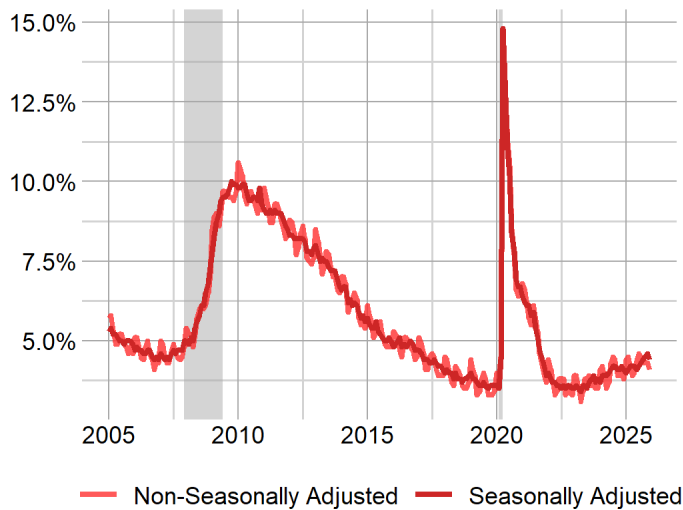
Area	Labor Force	Employed	Unemployed	Unemployment Rate	Labor Force Participation Rate	Employment Population Ratio
US						
U.S.	170,723,000	163,720,000	7,003,000	4.1	62.1	59.6
U.S. SA	171,495,000	163,992,000	7,503,000	4.4	62.4	59.7
State						
Nevada	1,713,961	1,629,418	84,543	4.9	63.7	60.6
Nevada SA	1,700,180	1,611,611	88,569	5.2	63.2	59.9

SA denotes seasonally adjusted data

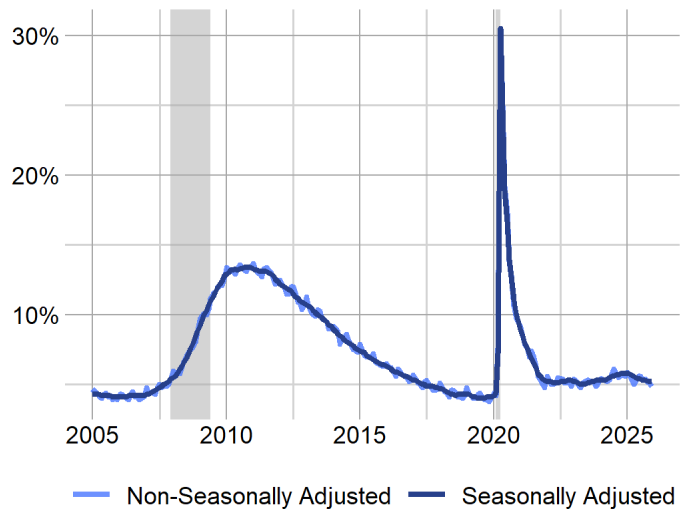
Seasonally adjusted estimates account for regularly seen seasonal employment patterns such as jobs associated with holiday hiring, holiday and weather seasons, or other jobs with seasonal components. The result of a seasonally adjusted estimate is usually a smoother estimate from which underlying economic trends can be seen. Adjusted estimates are in the summary table above, and in many of the other tables and figures throughout this document.

Nevada's seasonally adjusted unemployment rate was 5.2 percent in December, which was unchanged from November, and decreased by 0.6 pp from 5.8 percent when compared to December 2024. The number of unemployed individuals decreased by 87 from November for a current level of 88,569 people, which decreased by 7,181 unemployed people since December 2024. The labor force in Nevada is currently composed of 1,700,180 people, which has increased by 9,353 people since November, and increased by 42,231 people since December 2024.

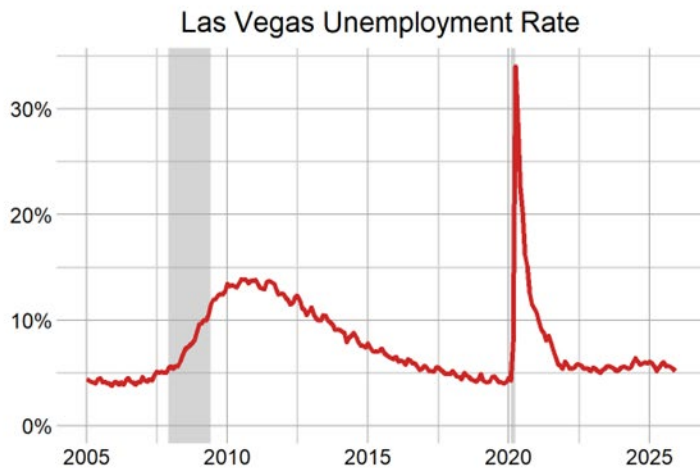
United States Unemployment Rate



Nevada Unemployment Rate

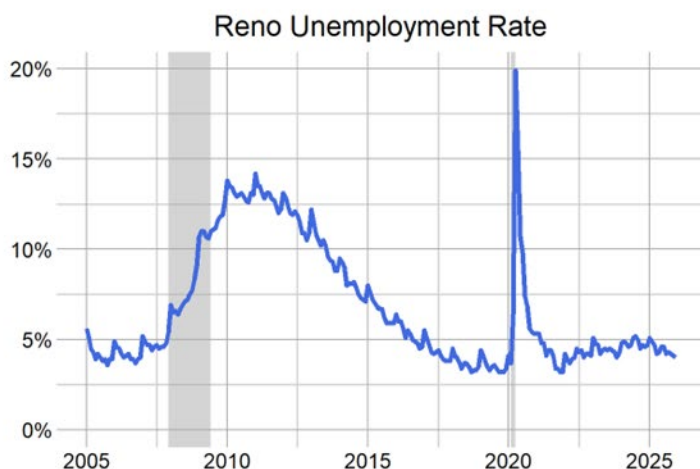


The Las Vegas Metropolitan Statistical Area's (MSA)s unemployment rate was 5.2 percent in December 2025, decreasing from 5.4 percent in November, and down from 5.9 percent in December 2024, non-seasonally adjusted. The number of unemployed individuals decreased by 2,969 since November for a current level of 66,117 people, which is 6,015 less unemployed people than in December 2024. The labor force in Las Vegas is currently composed of 1,264,516 people, which is 6,576 less people than in November, and is up 41,162 people since December 2024.



Las Vegas LAUS Summary	
As of December 2025	
Unemployment Rate	
December 2025	5.2
November 2025	5.4
December 2024	5.9
Maximum Rate	34
Unemployed Individuals	
December 2025	66,117
Change Compared to November 2025	-2,969
Change Compared to December 2024	-6,015
Maximum Level	367,867

The Reno MSA's unemployment rate was 4 percent in December 2025, decreasing from 4.1 percent in November, and down from 4.7 percent in December 2024, non-seasonally adjusted. The number of unemployed individuals decreased by 394 since November for a current level of 12,604 people, which is 1,639 less unemployed people than in December 2024. The labor force in Reno is currently composed of 312,849 people, which is 997 less people than in November, and is up 11,541 people since December 2024.



Reno LAUS Summary	
As of December 2025	
Unemployment Rate	
December 2025	4
November 2025	4.1
December 2024	4.7
Maximum Rate	19.9
Unemployed Individuals	
December 2025	12,604
Change Compared to November 2025	-394
Change Compared to December 2024	-1,639
Maximum Level	52,115

The Carson City MSA’s unemployment rate remained unchanged at 4 percent in December, and was down from 4.7 percent in December 2024, non-seasonally adjusted. The number of unemployed individuals decreased by 11 since November for a current level of 1,217 people, which is 150 less unemployed people than in December 2024. The labor force in Carson City is currently composed of 30,378 people, which is 72 less people than in November, and is up 1,199 people since December 2024.



Carson City LAUS Summary	
As of December 2025	
Unemployment Rate	
December 2025	4
November 2025	4
December 2024	4.7
Maximum Rate	19.5
Unemployed Individuals	
December 2025	1,217
Change Compared to November 2025	-11
Change Compared to December 2024	-150
Maximum Level	5,208

For more on the economy of your county including unemployment, employment, unemployment insurance, wages, and more visit our [Area Profiles Page](#).

Local Area Unemployment Statistics

Area		Labor Force	Employed	Unemployed	Unemployment Rate
US					
U.S.		170,723,000	163,720,000	7,003,000	4.1
U.S.	SA	171,495,000	163,992,000	7,503,000	4.4
State					
Nevada		1,713,961	1,629,418	84,543	4.9
Nevada	SA	1,700,180	1,611,611	88,569	5.2
Metropolitan Statistical Area					
Carson City, NV Metro Area		30,378	29,161	1,217	4.0
Reno-Sparks, NV Metro Area		312,849	300,245	12,604	4.0
Las Vegas-Henderson-North Las Vegas, NV Metro Area		1,264,516	1,198,399	66,117	5.2
Combined Statistical Area					
Reno-Carson City-Fernley, NV Comb. Statistical Area		380,313	364,968	15,345	4.0
Las Vegas-Henderson, NV-AZ Comb. Statistical Area		1,284,061	1,216,739	67,322	5.2
Micropolitan Statistical Area					
Elko, NV Micropolitan Statistical Area		29,134	28,080	1,054	3.6
Winnemucca, NV Micropolitan Statistical Area		8,782	8,464	318	3.6
Fallon, NV Micropolitan Statistical Area		11,513	11,046	467	4.1
Gardnerville Ranchos, NV-CA Micropolitan Statistical Area		25,573	24,516	1,057	4.1
Pahrump, NV Micropolitan Statistical Area		19,545	18,340	1,205	6.2
County					
Pershing County		2,463	2,378	85	3.5
Elko County		28,404	27,383	1,021	3.6
Humboldt County		8,782	8,464	318	3.6
White Pine County		3,881	3,742	139	3.6
Washoe County		279,717	268,573	11,144	4.0
Carson City		30,378	29,161	1,217	4.0
Churchill County		11,513	11,046	467	4.1
Douglas County		25,082	24,060	1,022	4.1
Lander County		2,547	2,439	108	4.2
Lyon County		31,316	29,951	1,365	4.4
Eureka County		730	697	33	4.5
Lincoln County		1,870	1,785	85	4.5
Clark County		1,264,516	1,198,399	66,117	5.2
Storey County		1,816	1,721	95	5.2
Nye County		19,545	18,340	1,205	6.2
Esmeralda County		319	299	20	6.3
Mineral County		1,080	980	100	9.3
City					
Elko City*		11,442	11,036	406	3.5
Sparks		62,486	60,116	2,370	3.8
Fernley City*		13,607	13,075	532	3.9
Reno		159,354	153,076	6,278	3.9
Carson City		30,378	29,161	1,217	4.0
Mesquite*		8,390	8,015	375	4.5
Boulder City*		6,657	6,333	324	4.9
Henderson		178,000	169,049	8,951	5.0
Las Vegas		352,122	333,397	18,725	5.3
North Las Vegas		149,478	141,056	8,422	5.6

*State Specific Areas, not endorsed or published by the BLS
SA denotes seasonally adjusted data

The cities of Boulder City, Elko, Fernley, and Mesquite are state specific areas. These estimates are not endorsed or published by the BLS.

500 East Third Street, Room 200 • Carson City, NV 89713 • (775) 684-3911 • Fax (775) 684-3908

2800 E. St. Louis Avenue • Las Vegas, Nevada 89104 • (702) 486-7923

detr.nv.gov

Unemployment Insurance Benefits

In December 2025, 13,852 initial claims for unemployment insurance were filed in Nevada, representing an increase of 1,631 claims, or 13.3 percent, from November 2025 when there were 12,221 claims. However, this is an increase of 603 claims, or 4.6 percent, from December 2024 when there were 13,249 initial claims.

December 2025 Unemployment Insurance Activity						
Measure	December 2025	December 2024	% change	November 2025	% change	12 month average
Initial Claims	13,852	13,249	4.6%	12,221	13.3%	11,865
Weeks Claimed	121,859	123,007	-0.9%	124,987	-2.5%	110,536
Weeks Compensated	125,331	114,801	9.2%	92,116	36.1%	97,572
Amount Compensated	\$60,749,591	\$53,858,784	12.8%	\$44,265,257	37.2%	\$45,646,953
Weeks Compensated Total Unemployment	112,142	102,564	9.3%	82,249	36.3%	86,838
Amount Compensated Total Unemployment	\$56,937,854	\$50,424,698	12.9%	\$41,459,811	37.3%	\$42,649,932
First Payments	8,417	7,056	19.3%	5,904	42.6%	6,098
Final Payments (Exhaustions)	2,924	2,664	9.8%	2,293	27.5%	2,411
Average Weekly Benefit	\$507.73	\$491.64	3.3%	\$504.08	0.7%	\$490.70
Average Duration (in weeks)	14.24	15.12	-5.8%	14.38	-0.9%	14.72
Exhaustion Rate	41.04%	41.86%	-2.0%	41.51%	-1.1%	41.88%

Source: ETA 5159

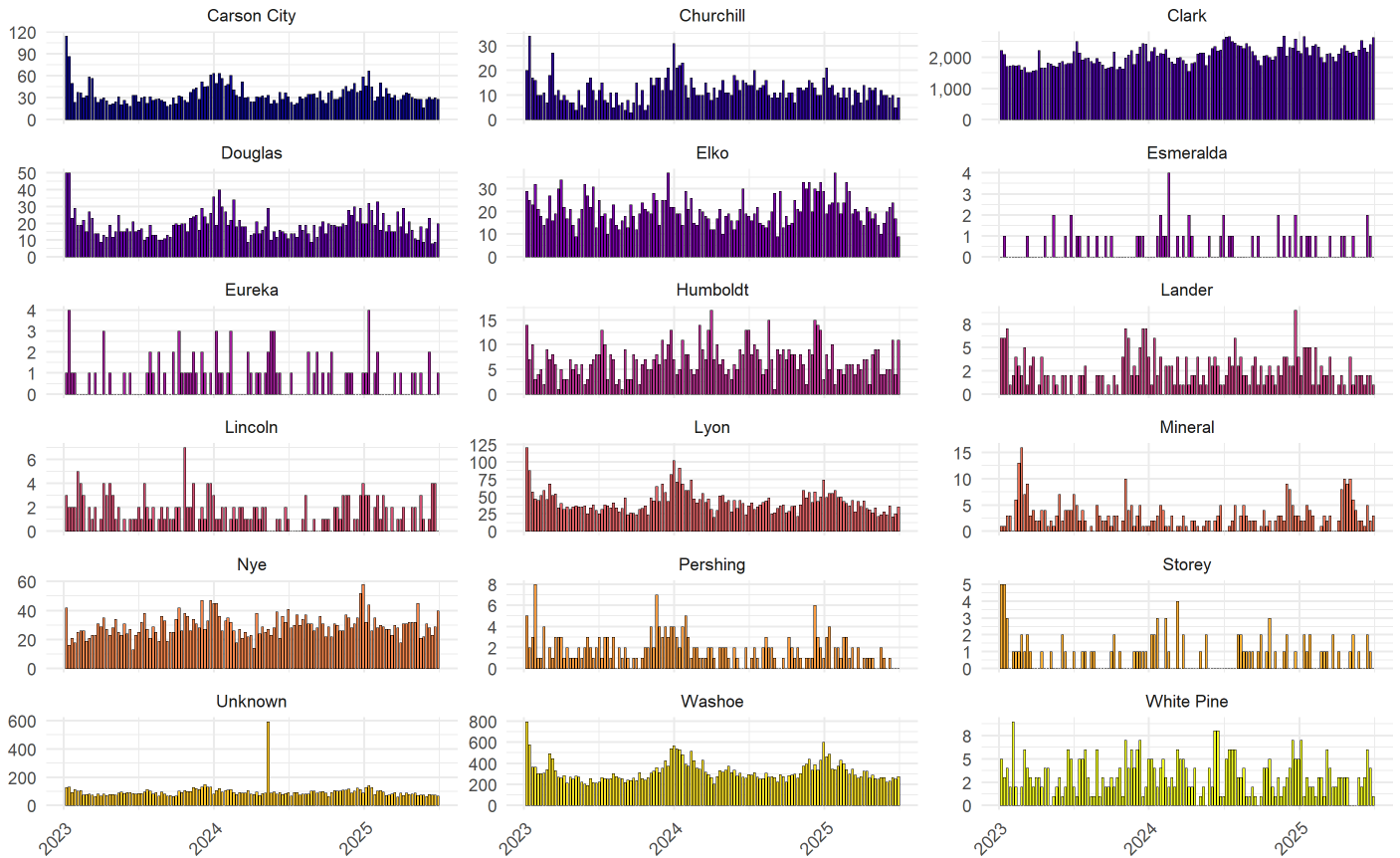
500 East Third Street, Room 200 • Carson City, NV 89713 • (775) 684-3911 • Fax (775) 684-3908

2800 E. St. Louis Avenue • Las Vegas, Nevada 89104 • (702) 486-7923

detr.nv.gov

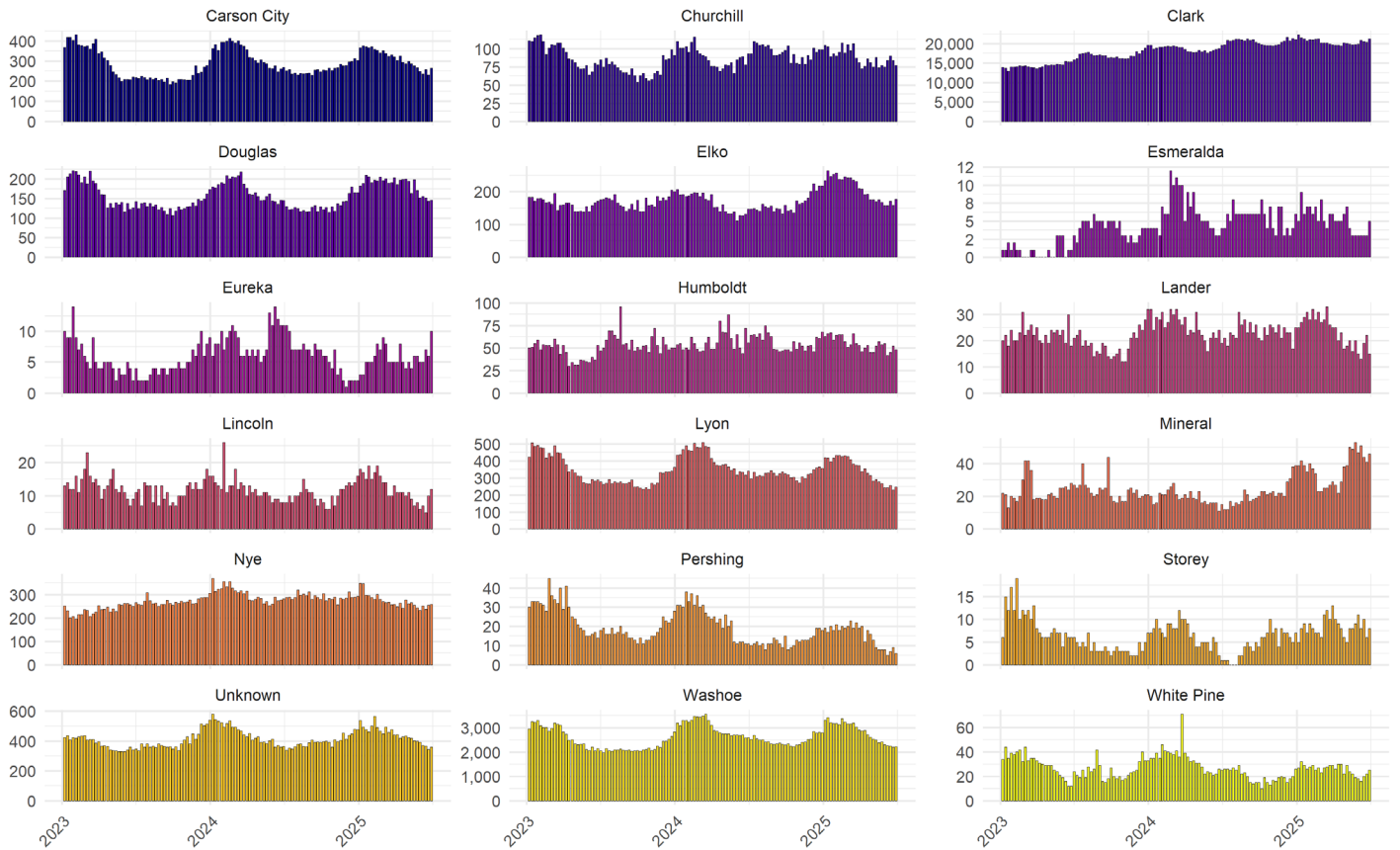
Initial Claims by County

weekly claim totals since January 2023



Source: DETR Internal Reporting

Continued Claims by County
weekly claim totals since January 2023



Source: DETR Internal Reporting
Figure 11

Unemployment Rate Summary LAUS

Area	December 2025	November 2025	Dec - Nov	December 2024	Yearly Change
US					
U.S.	4.1	4.3	-0.2	3.8	0.3
U.S. SA	4.4	4.6	-0.2	4.1	0.3
State					
Nevada	4.9	5.1	-0.2	5.6	-0.7
Nevada SA	5.2	5.2	0.0	5.8	-0.6
Metropolitan Statistical Area					
Carson City, NV Metro Area	4.0	4.0	0.0	4.7	-0.7
Reno-Sparks, NV Metro Area	4.0	4.1	-0.1	4.7	-0.7
Las Vegas-Henderson-North Las Vegas, NV Metro Area	5.2	5.4	-0.2	5.9	-0.7
Combined Statistical Area					
Reno-Carson City-Fernley, NV Comb. Statistical Area	4.0	4.2	-0.2	4.7	-0.7
Las Vegas-Henderson, NV-AZ Comb. Statistical Area	5.2	5.5	-0.3	5.9	-0.7
Micropolitan Statistical Area					
Elko, NV Micropolitan Statistical Area	3.6	3.7	-0.1	4.3	-0.7
Winnemucca, NV Micropolitan Statistical Area	3.6	3.7	-0.1	4.1	-0.5
Fallon, NV Micropolitan Statistical Area	4.1	4.3	-0.2	4.9	-0.8
Gardnerville Ranchos, NV-CA Micropolitan Statistical Area	4.1	4.4	-0.3	4.8	-0.7
Pahrump, NV Micropolitan Statistical Area	6.2	6.5	-0.3	7.4	-1.2
County					
Pershing County	3.5	3.6	-0.1	4.5	-1.0
Elko County	3.6	3.6	0.0	4.3	-0.7
Humboldt County	3.6	3.7	-0.1	4.1	-0.5
White Pine County	3.6	3.7	-0.1	4.0	-0.4
Washoe County	4.0	4.1	-0.1	4.7	-0.7
Carson City	4.0	4.0	0.0	4.7	-0.7
Churchill County	4.1	4.3	-0.2	4.9	-0.8
Douglas County	4.1	4.3	-0.2	4.8	-0.7
Lander County	4.2	4.5	-0.3	5.3	-1.1
Lyon County	4.4	4.5	-0.1	5.3	-0.9
Eureka County	4.5	4.9	-0.4	5.9	-1.4
Lincoln County	4.5	4.8	-0.3	5.1	-0.6
Clark County	5.2	5.4	-0.2	5.9	-0.7
Storey County	5.2	5.3	-0.1	5.7	-0.5
Nye County	6.2	6.5	-0.3	7.4	-1.2
Esmeralda County	6.3	6.0	0.3	6.2	0.1
Mineral County	9.3	10.5	-1.2	10.2	-0.9
City					
Elko City*	3.5	3.6	-0.1	3.9	-0.4
Sparks	3.8	3.9	-0.1	4.6	-0.8
Fernley City*	3.9	4.1	-0.2	4.6	-0.7
Reno	3.9	4.1	-0.2	4.6	-0.7
Carson City	4.0	4.0	0.0	4.7	-0.7
Mesquite*	4.5	5.0	-0.5	5.7	-1.2
Boulder City*	4.9	5.1	-0.2	6.3	-1.4
Henderson	5.0	5.2	-0.2	5.6	-0.6
Las Vegas	5.3	5.5	-0.2	5.9	-0.6
North Las Vegas	5.6	5.8	-0.2	6.2	-0.6

* State Specific Areas, not endorsed or published by the BLS
SA denotes seasonally adjusted data

500 East Third Street, Room 200 • Carson City, NV 89713 • (775) 684-3911 • Fax (775) 684-3908

2800 E. St. Louis Avenue • Las Vegas, Nevada 89104 • (702) 486-7923

detr.nv.gov

Labor Force Levels Summary LAUS

Area	December 2025	November 2025	Dec - Nov	December 2024	Yearly Change
US					
U.S.	170,723,000	171,467,000	-744,000	167,746,000	2,977,000
U.S. SA	171,495,000	171,571,000	-76,000	168,547,000	2,948,000
State					
Nevada	1,713,961	1,721,803	-7,842	1,654,397	59,564
Nevada SA	1,700,180	1,690,827	9,353	1,657,949	42,231
Metropolitan Statistical Area					
Carson City, NV Metro Area	30,378	30,450	-72	29,179	1,199
Las Vegas-Henderson-North Las Vegas, NV Metro Area	1,264,516	1,271,092	-6,576	1,223,354	41,162
Reno-Sparks, NV Metro Area	312,849	313,846	-997	301,308	11,541
Combined Statistical Area					
Las Vegas-Henderson, NV-AZ Comb. Statistical Area	1,284,061	1,290,746	-6,685	1,242,322	41,739
Reno-Carson City-Fernley, NV Comb. Statistical Area	380,313	381,268	-955	365,034	15,279
Micropolitan Statistical Area					
Elko, NV Micropolitan Statistical Area	29,134	29,286	-152	27,729	1,405
Fallon, NV Micropolitan Statistical Area	11,513	11,494	19	10,804	709
Gardnerville Ranchos, NV-CA Micropolitan Statistical Area	25,573	25,478	95	23,743	1,830
Pahrump, NV Micropolitan Statistical Area	19,545	19,654	-109	18,968	577
Winnemucca, NV Micropolitan Statistical Area	8,782	8,751	31	8,323	459
County					
Churchill County	11,513	11,494	19	10,804	709
Clark County	1,264,516	1,271,092	-6,576	1,223,354	41,162
Douglas County	25,082	25,076	6	23,274	1,808
Elko County	28,404	28,568	-164	27,034	1,370
Esmeralda County	319	317	2	289	30
Eureka County	730	718	12	695	35
Humboldt County	8,782	8,751	31	8,323	459
Lander County	2,547	2,531	16	2,414	133
Lincoln County	1,870	1,852	18	1,756	114
Lyon County	31,316	31,370	-54	30,179	1,137
Mineral County	1,080	1,097	-17	1,129	-49
Nye County	19,545	19,654	-109	18,968	577
Pershing County	2,463	2,450	13	2,255	208
Storey County	1,816	1,819	-3	1,746	70
Washoe County	279,717	280,657	-940	269,383	10,334
White Pine County	3,881	3,905	-24	3,614	267
Carson City	30,378	30,450	-72	29,179	1,199
City					
Fernley City*	13,607	13,632	-25	13,076	531
Boulder City*	6,657	6,692	-35	6,494	163
Carson City	30,378	30,450	-72	29,179	1,199
Elko City*	11,442	11,505	-63	10,859	583
Henderson	178,000	178,924	-924	172,040	5,960
Las Vegas	352,122	353,906	-1,784	340,421	11,701
Mesquite*	8,390	8,462	-72	8,166	224
North Las Vegas	149,478	150,233	-755	144,479	4,999
Reno	159,354	159,905	-551	153,414	5,940
Sparks	62,486	62,696	-210	60,260	2,226

* State Specific Areas, not endorsed or published by the BLS

SA denotes seasonally adjusted data

500 East Third Street, Room 200 • Carson City, NV 89713 • (775) 684-3911 • Fax (775) 684-3908

2800 E. St. Louis Avenue • Las Vegas, Nevada 89104 • (702) 486-7923

detr.nv.gov

Employed Individuals Levels Summary LAUS

Area	December 2025	November 2025	Dec - Nov	December 2024	Yearly Change
US					
U.S.	163,720,000	164,066,000	-346,000	161,294,000	2,426,000
U.S. SA	163,992,000	163,741,000	251,000	161,661,000	2,331,000
State					
Nevada	1,629,418	1,633,669	-4,251	1,561,470	67,948
Nevada SA	1,611,611	1,602,171	9,440	1,562,199	49,412
Metropolitan Statistical Area					
Carson City, NV Metro Area	29,161	29,222	-61	27,812	1,349
Las Vegas-Henderson-North Las Vegas, NV Metro Area	1,198,399	1,202,006	-3,607	1,151,222	47,177
Reno-Sparks, NV Metro Area	300,245	300,848	-603	287,065	13,180
Combined Statistical Area					
Las Vegas-Henderson, NV-AZ Comb. Statistical Area	1,216,739	1,220,379	-3,640	1,168,785	47,954
Reno-Carson City-Fernley, NV Comb. Statistical Area	364,968	365,428	-460	347,745	17,223
Micropolitan Statistical Area					
Elko, NV Micropolitan Statistical Area	28,080	28,216	-136	26,536	1,544
Fallon, NV Micropolitan Statistical Area	11,046	10,998	48	10,275	771
Gardnerville Ranchos, NV-CA Micropolitan Statistical Area	24,516	24,360	156	22,593	1,923
Pahrump, NV Micropolitan Statistical Area	18,340	18,373	-33	17,563	777
Winnemucca, NV Micropolitan Statistical Area	8,464	8,427	37	7,984	480
County					
Churchill County	11,046	10,998	48	10,275	771
Clark County	1,198,399	1,202,006	-3,607	1,151,222	47,177
Douglas County	24,060	23,996	64	22,156	1,904
Elko County	27,383	27,533	-150	25,882	1,501
Esmeralda County	299	298	1	271	28
Eureka County	697	683	14	654	43
Humboldt County	8,464	8,427	37	7,984	480
Lander County	2,439	2,418	21	2,285	154
Lincoln County	1,785	1,764	21	1,666	119
Lyon County	29,951	29,956	-5	28,591	1,360
Mineral County	980	982	-2	1,014	-34
Nye County	18,340	18,373	-33	17,563	777
Pershing County	2,378	2,361	17	2,153	225
Storey County	1,721	1,723	-2	1,647	74
Washoe County	268,573	269,169	-596	256,827	11,746
White Pine County	3,742	3,760	-18	3,468	274
Carson City	29,161	29,222	-61	27,812	1,349
City					
Fernley City*	13,075	13,077	-2	12,481	594
Boulder City*	6,333	6,352	-19	6,084	249
Carson City	29,161	29,222	-61	27,812	1,349
Elko City*	11,036	11,096	-60	10,431	605
Henderson	169,049	169,558	-509	162,394	6,655
Las Vegas	333,397	334,401	-1,004	320,273	13,124
Mesquite*	8,015	8,040	-25	7,700	315
North Las Vegas	141,056	141,481	-425	135,503	5,553
Reno	153,076	153,416	-340	146,382	6,694
Sparks	60,116	60,250	-134	57,487	2,629

* State Specific Areas, not endorsed or published by the BLS

SA denotes seasonally adjusted data

500 East Third Street, Room 200 • Carson City, NV 89713 • (775) 684-3911 • Fax (775) 684-3908

2800 E. St. Louis Avenue • Las Vegas, Nevada 89104 • (702) 486-7923

detr.nv.gov

Unemployed Individuals Levels Summary LAUS

Area	December 2025	November 2025	Dec - Nov	December 2024	Yearly Change
US					
U.S.	7,003,000	7,401,000	-398,000	6,452,000	551,000
U.S. SA	7,503,000	7,831,000	-328,000	6,886,000	617,000
State					
Nevada	84,543	88,134	-3,591	92,927	-8,384
Nevada SA	88,569	88,656	-87	95,750	-7,181
Metropolitan Statistical Area					
Carson City, NV Metro Area	1,217	1,228	-11	1,367	-150
Las Vegas-Henderson-North Las Vegas, NV Metro Area	66,117	69,086	-2,969	72,132	-6,015
Reno-Sparks, NV Metro Area	12,604	12,998	-394	14,243	-1,639
Combined Statistical Area					
Las Vegas-Henderson, NV-AZ Comb. Statistical Area	67,322	70,367	-3,045	73,537	-6,215
Reno-Carson City-Fernley, NV Comb. Statistical Area	15,345	15,840	-495	17,289	-1,944
Micropolitan Statistical Area					
Elko, NV Micropolitan Statistical Area	1,054	1,070	-16	1,193	-139
Fallon, NV Micropolitan Statistical Area	467	496	-29	529	-62
Gardnerville Ranchos, NV-CA Micropolitan Statistical Area	1,057	1,118	-61	1,150	-93
Pahrump, NV Micropolitan Statistical Area	1,205	1,281	-76	1,405	-200
Winnemucca, NV Micropolitan Statistical Area	318	324	-6	339	-21
County					
Churchill County	467	496	-29	529	-62
Clark County	66,117	69,086	-2,969	72,132	-6,015
Douglas County	1,022	1,080	-58	1,118	-96
Elko County	1,021	1,035	-14	1,152	-131
Esmeralda County	20	19	1	18	2
Eureka County	33	35	-2	41	-8
Humboldt County	318	324	-6	339	-21
Lander County	108	113	-5	129	-21
Lincoln County	85	88	-3	90	-5
Lyon County	1,365	1,414	-49	1,588	-223
Mineral County	100	115	-15	115	-15
Nye County	1,205	1,281	-76	1,405	-200
Pershing County	85	89	-4	102	-17
Storey County	95	96	-1	99	-4
Washoe County	11,144	11,488	-344	12,556	-1,412
White Pine County	139	145	-6	146	-7
Carson City	1,217	1,228	-11	1,367	-150
City					
Fernley City*	532	555	-23	595	-63
Boulder City*	324	340	-16	410	-86
Carson City	1,217	1,228	-11	1,367	-150
Elko City*	406	409	-3	428	-22
Henderson	8,951	9,366	-415	9,646	-695
Las Vegas	18,725	19,505	-780	20,148	-1,423
Mesquite*	375	422	-47	466	-91
North Las Vegas	8,422	8,752	-330	8,976	-554
Reno	6,278	6,489	-211	7,032	-754
Sparks	2,370	2,446	-76	2,773	-403

* State Specific Areas, not endorsed or published by the BLS

SA denotes seasonally adjusted data

500 East Third Street, Room 200 • Carson City, NV 89713 • (775) 684-3911 • Fax (775) 684-3908

2800 E. St. Louis Avenue • Las Vegas, Nevada 89104 • (702) 486-7923

detr.nv.gov

End Notes

Prepared by the Research and Analysis Bureau with contributions from: Bhraman Gulati, Antonio Solorio, Marianne Kattenhorn, Dionny McDonnell, Dave Schmidt, James Bathgate, and Tim Wilcox.

Special thanks to all the R and RStudio developers that built the packages to make this possible. Packages used in this report include tidyverse, DBI, tidyquant, data.table, scales, gt, kableExtra, ggthemes, cowplot, gridExtra, RcppRoll, viridis, fiftystater, ggforce, knitr, flexdashboard, lubridate, plotly, patchwork, reshape2.

This workforce product was funded by the Workforce Information Grant awarded by the U.S. Department of Labor's Employment and Training Administration. The product was created by the recipient and does not necessarily reflect the official position of the U.S. Department of Labor. The U.S. Department of Labor makes no guarantees, warranties, or assurances of any kind, express or implied, with respect to such information, including any information on linked sites and including, but not limited to, accuracy of the information or its completeness, timeliness, usefulness, adequacy, continued availability, or ownership. This product is copyrighted by the institution that created it. Internal use by an organization and/or personal use by an individual for non-commercial purposes is permissible. All other uses require the prior authorization of the copyright owner.