

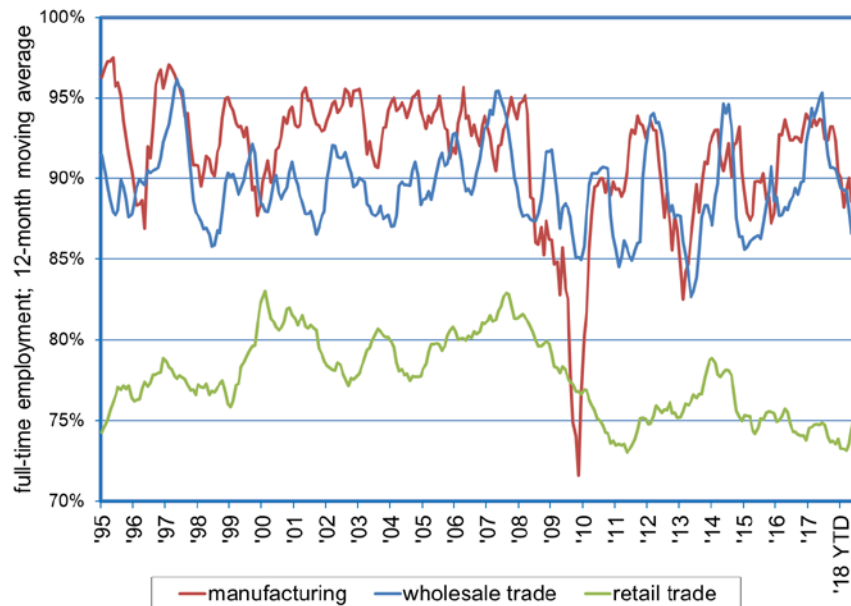
Research Notes



Full-time and Part-time Employment by Industry
Dionny McDonnell, Economist

Note: 2018:127
October 17, 2018

Manufacturing, Wholesale Trade, and Retail Trade Employment Concentrated in Full-time Positions



- The monthly Current Population Survey¹ (CPS) sponsored by the Census Bureau and the Bureau of Labor Statistics, allows for the analysis of full time and part time employment by industry in Nevada. Full time workers include those persons who usually work 35 hours or more during the week. Part time workers include those who typically work less than 35 hours during the week. Information from the Current Population Survey (CPS) available since 1994, provides employment estimates for three major industries: manufacturing, retail trade, and wholesale trade.
- During the period 1994-2005, Nevadans employed in the manufacturing industry averaged 29,340. Full-time positions represented 93.4% of total manufacturing employment or 27,400 full-time positions. Those working part-time accounted for 6.6% or an average of 1,940 part-time positions. Because of the 2007 recession, by November 2009 manufacturing employment fell to 13,660, resulting in not only in a loss of full-time positions, but also a declined in share of full-time employment to 71.6%. Additionally, part-time employment represented 28.4% of the total. For the year ending in August 2018, manufacturing employment stood at 52,990; not only recovering previously lost jobs, but returning full-time positions close to previous share levels at 93.1%. Part-time positions accounted for 6.9% of the total.

continues on next page

¹ The monthly Current Population Survey (CPS) obtains information about the employment status of each member of the household 16 years of age and older. Each employed person is counted only once, even if he or she holds more than one job.

Research Notes



- During the period 1994-2005, Nevadans employed in the wholesale trade industry averaged 20,640. Full-time position represented 89.7% of total wholesale trade employment or 18,510 positions. Those working part-time accounted for 10.3% or an average of 2,125 positions. Because of the 2007 recession, by October 2014 employment in this industry fell to 15,440, resulting in a decline in percentage share to 87.5% of the total. On the other hand, part-time employment accounted for 12.5% of the total. For the year ending in August 2018, wholesale trade employment was 26,720; not only were lost jobs recovered, but Nevadans employed full-time represented 90.7% of the total, which is above average levels. Those employed part-time accounted 9.3%.
- The number of Nevadans employed in the retail trade industry averaged 143,820 from 1994 to 2005. Those working full-time represented 78.6% of total retail employment or 113,090 positions. Part-time workers accounted for 21.4% or 30,730 positions. Although by December 2009 employment in this industry increased to 194,470, due to the 2007 recession full-time workers share declined to 76.6% of total retail trade employment. Those working part-time accounted for 23.4%. For the year ending in August 2018, Nevadans employed in retail trade stood at 249,080. Those working full-time in retail trade represented 75.5% of total retail trade employment, which is below average levels. Those working part-time accounted for 24.5%.
- Based on historical CPS estimates, employment has been concentrated in full-time positions in these three major industries in the Silver State.