

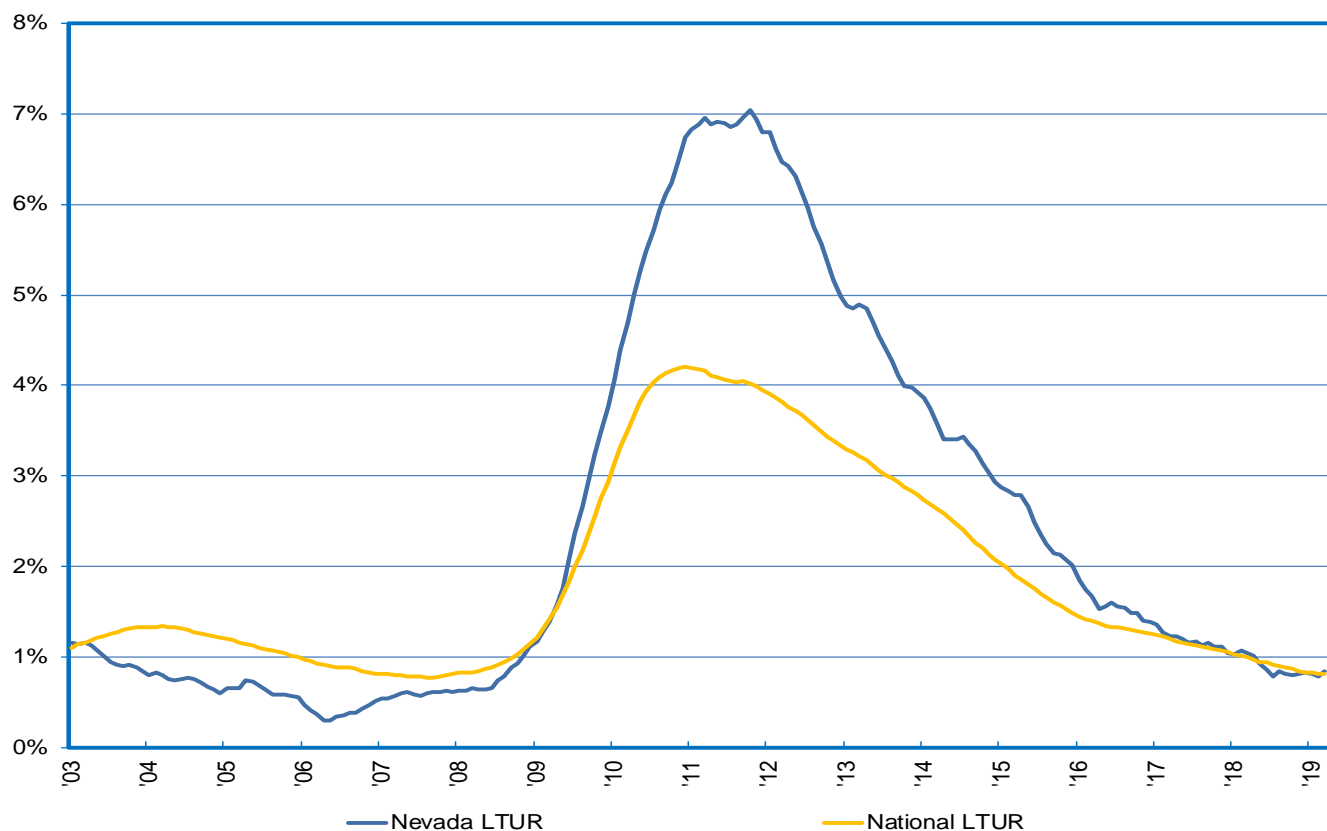
Research Notes



Long-Term Unemployment Rate
Michael La Rue, Economist

Note: 2019:42
April 17, 2019

Long-Term Unemployment Rates in Nevada are Similar to National Rates



- Information from the monthly Current Population Survey (CPS), sponsored by the Census Bureau and the Bureau of Labor Statistics (BLS) enables the analysis of the long-term unemployment rate (LTUR) in Nevada with comparison to the nation. Long-term unemployment is defined as being unemployed for 27 weeks or more.
- From 1999 through the end of 2008 the LTUR in Nevada averaged 0.7 percent, and the unemployment rate averaged 4.3 percent. For the nation the average over the same period was 0.9 percent for the LTUR, and 4.6 percent for the unemployment rate.
- In March 2011 the Nevada LTUR reached a peak of seven percent, that was higher than the national rate of approximately four percent in December 2010. This is similar to the trends of the total unemployment rate for Nevada that is also higher than the national rate.

Continued next page

Research Notes



- Since early 2017 the Nevada LTUR has returned to a rate similar to the national LTUR. In March 2019 the Nevada and national LTUR were approximately 0.8 percent. Additionally, both rates are returning to the historical rates that averaged 0.7 percent for Nevada and 0.9 percent for the nation from 1999 through 2008.

This workforce product was funded by a grant awarded by the U.S. Department of Labor's Employment and Training Administration. The product was created by the recipient and does not necessarily reflect the official position of the U.S. Department of Labor. The U.S. Department of Labor makes no guarantees, warranties, or assurances of any kind, express or implied, with respect to such information, including any information on linked sites and including, but not limited to, accuracy of the information or its completeness, timeliness, usefulness, adequacy, continued availability, or ownership. This product is copyrighted by the institution that created it. Internal use by an organization and/or personal use by an individual for non-commercial purposes is permissible. All other uses require the prior authorization of the copyright owner.